



THE GREAT HALL

THE GREAT HALL

The imposing medieval Great Hall is the largest and most impressive room, and is where royalty and state visitors have been entertained down the centuries since it was originally built in 1411.

A magnificent room, the Great Hall is 152 feet long, 49.5 feet broad and 89 feet high. The 15th century walls are 5 feet thick and divided by clustered columns and mouldings. At each end of the hall is a splendid Gothic window, occupying the whole width, and nearly perfect in all architectural details. The stone arched roof was designed by Sir Giles Gilbert Scott in 1953 and is the 5th roof.

Each of the Romanesque windows in the side walls contain the names of previous Lord Mayors of London above chevrons interspersed with monograms of reigning monarchs in the middle, starting with the first Lord Mayor of London Henry Fitz Ailwyn in 1189 during the reign of King Richard I.

This most impressive hall has several splendid monuments to national heroes, including Admiral Lord Nelson, the Duke of

Wellington, Chatham, Lord Mayor Beckford, William Pitt, and most recently Sir Winston Churchill.

Also home to the colossal figures of the famous legendary giants Gog and Magog who were said to have founded London. The original Elizabethan figures were made of papier mache. In 1708 they were replaced by 14' high ones made by Richard Saunders in oak. The limewood ones in place today are 9' high and were made by David Evans in 1953.

The Great Hall hosts the Lord Mayor's Banquet each year, and is where royalty and state visitors have been entertained down the centuries. It was here that Whittington, as Lord Mayor, entertained Henry V and his Queen, and paid the delicate compliment of burning His Majesty's bonds for £60,000 on a fire of sandalwood. It has also been the setting for many historic trials.

THE GREAT HALL

Function	Maximum Capacity
Reception	900 guests
Banquet	704*/600 guests
Concert	760 guests
Meeting	760 guests

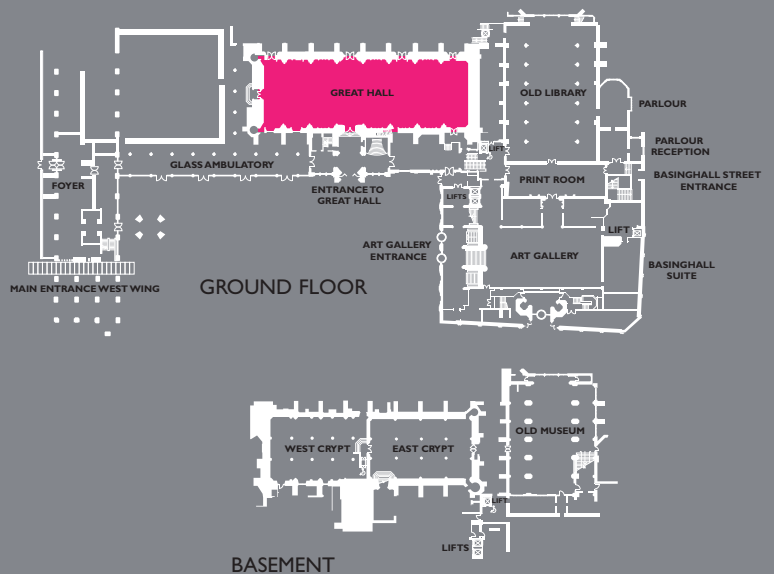
The Minstrels' Gallery at the west end can accommodate a limited number of musicians.

There is a PA system which can be connected to other function rooms.

There is disabled access.

Terms & conditions of use for Guildhall are on our website www.cityoflondon.gov.uk/guildhall

**For top table and sprig type table arrangements. 550 use of round tables taking up a greater floor space will reduce this figure.*



- 1). Guildhall provide a PA system which can be connected to other function rooms. A technician is available if required.
- 2). Full air conditioning and heating.
- 3). 24 hour building security.
- 4). Furniture, including staging, is available for a variety of settings.
- 5). All rooms are accessible via lift or ramp. Disabled toilets are available throughout the building. Disabled parking facilities can be arranged if required.
- 6). A Sound Enhancement System with portable induction loops is available.
- 7). Cloakroom facilities and toilets are located near the entrance to Guildhall. Cloakroom staff are also provided.

For more information or to obtain an application form please visit www.cityoflondon.gov.uk/guildhall or call 020 7123 4567

Terms & conditions of use for Guildhall are on our website www.cityoflondon.gov.uk/guildhall



GUILDHALL
L O N D O N